



**dataplastics**

**PROTECTIVE CAPS  
AND PLUGS**

Plastic Injection Moulding Specialists



## STANDARD PARTS AND PLASTIC INJECTION MOULDING SPECIALISTS

Data Plastics was founded by Chairman Joe Reeve in 1990 importing protective caps and plugs for transit protection. The company grew rapidly moving into manufacturing and incorporating the famous 'Red Cap' range as well as custom moulded plastic parts.

Now operating from multiple manufacturing sites, Data Plastics design, tool, manufacture, assemble and pack millions of high quality plastic components for UK and worldwide customers.

Data Plastics is committed to continual investment in its plant, machinery, warehousing facilities and staff training and development.

Our strict quality standards are at the heart of our company ethos and we are ISO9001, ISO14001 and ISO13485 compliant.



- PRODUCT DESIGN • 3D PRINTING • PROTOTYPING • TOOLING • INJECTION MOULDING
- CLASS 7 CLEAN ROOM • ASSEMBLY AND PACKING • ISO QUALITY STANDARDS

### OVER 25 YEARS OF MANUFACTURING EXCELLENCE

## CONTENTS

Supporting Innovation	2
Quality Standards	4
SP33000 SERIES ~ Tapered Caps/Plugs	6
SP25000 SERIES ~ BSP/GAS Plugs	8
SP26000 SERIES ~ BSP/GAS Caps	9
SP27000 SERIES ~ UNF/JIC Caps	10
SP28000 SERIES ~ BSP/GAS Plugs	11
SP29000 SERIES ~ UNF/JIC Plugs	12
SP98100 SERIES ~ Ferrules	13
SP98114 SERIES ~ Protective Thimble	13
SP70000 SERIES ~ Parallel Caps	14
HF SERIES ~ Flared Fitting Plugs	15
T SERIES ~ Tapered Caps & Plugs	16
VC SERIES ~ Vinyl Caps	21
OE SERIES ~ Open End Connectors	24
CE SERIES ~ Closed End Connectors	24
SI SERIES ~ Snap-In Plugs	25
RIBBED INSERTS ~ Round	27
RIBBED INSERTS ~ Rectangular	29
RIBBED INSERTS ~ Square	31
SP60000 SERIES ~ Screw Cap Covers and Washers	33
Other Products	34
Conversion Table	36

## WE PRIDE OURSELVES ON SOLVING COMPLEX AND INNOVATIVE CHALLENGES, TRANSFORMING BRIGHT IDEAS INTO REALITY

We welcome new projects – large or small and have played significant roles in bringing many well-known products to market.

### CUSTOM MOULDING

As plastic injection moulding specialists we offer a complete service. Our technical department are on hand to provide assistance at every stage of your project and our CAD engineers are here to help with design, prototype, tooling, small batch runs through to full manufacture.

We supply a diverse range of clients and a wide variety of industrial sectors including aerospace, automotive, defence, engineering, medical, pharmaceutical, electronics, mobile communications, retail and scientific instruments.

### DATA PLASTICS MEDICAL

High Quality Standards are a fundamental part of the Data Plastics operation.

We manufacture millions of plastic parts used daily in surgical, medical and laboratory settings. Our cleanroom is validated against BS EN ISO 14644 to Class 7. We are also certified to BS EN ISO 13485 for production of medical and bio-medical components.

Visit our website at [www.dataplasticsmedical.co.uk](http://www.dataplasticsmedical.co.uk)



### 3D PROTOTYPING AND TOOLING

Our experienced tooling and CAD engineers are able to offer help and assistance through every stage of your product development and can produce the most complex of components from 3D dimensional drawings.

With in-house CAD design and 3D printing facilities, Data Plastics can offer a cost effective route to prototyping new components.

Visit our website at [www.dataplastics.co.uk](http://www.dataplastics.co.uk)



### ASSEMBLY AND PACKAGING

Data Plastics can assemble and pack your products ready for the market place. Our experienced staff can give practical help and advice to guide you through the very best options for your product.

### MOUTHGUARDS DIRECT

Data Plastics manufacture and supply a range of coloured and flavoured mouthguards suitable for all ages. They offer exceptional value for money, highly engineered yet simple mouthguards that provide excellent protection, comfort and durability for use in a wide range of contact sports.

Visit our website at [www.mouthguardsdirect.co.uk](http://www.mouthguardsdirect.co.uk)



Our Quality Certification is maintained by our experienced team of quality assurance engineers and inspectors who continually monitor and control all aspects of our production and manufacturing processes.

## BS EN ISO 9001

We operate **BS EN ISO 9001** across our company and monitor quality issues with a process of continual improvement.

## BS EN ISO 13485

**BS EN ISO 13485** is the international standard quality management system for the design, development, production, installation and servicing of medical devices.

## BS EN ISO 14001

**BS EN ISO 14001** relates to the implementation of an effective environmental management system to help us minimise how our operations and processes negatively affect the environment. It is also designed to help us comply with environmental laws and regulations as well as help us to look at ways that we can improve our processes.

## CMM TECHNOLOGY

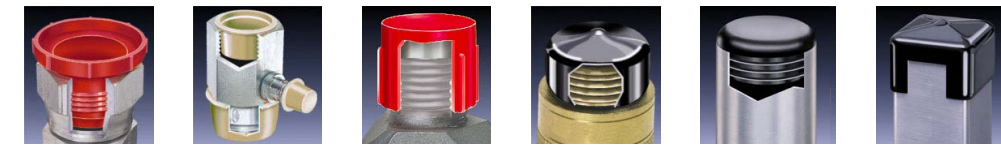
We have full in-house metrology capacity with the latest technology.

The CMM Axiom 900 (Co-ordinate Measuring Machine), that uses advanced 3D geometric measurement software, touch probes and the non-contact high resolution CMM camera equipment. With this advanced inspection technology we are able to take accurate profiling edge and surface feature measurements and make direct comparisons to component CAD models.



## Product Protection ~ Caps and Plugs

An extensive range of closures are used for protection during transportation and storage in many industries. They can be used to keep open ports free of contaminants, protect delicate threads or products by covering exposed parts or edges.



Data Plastics is a leading manufacturer and supplier of standard part industrial closures. We supply plastic caps, plugs and masks designed to preserve and protect products.

We offer products in a variety of plastic materials and colours spanning durable PVC caps and LDPE plugs, to thermoplastic rubber plugs, vinyl caps and finned plastic bungs. With over 1,000 different types and sizes of stock closures available, we will supply when you need them.

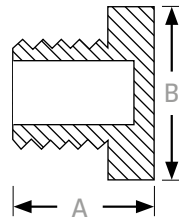
The following pages are a guide to our many standard part items. Our stock range is continually changing and we are able to source many parts not shown in this catalogue.

Contact us with any specific requests or to discuss standard or bespoke requirements on 01993 700 777 or visit [www.dataplastics.co.uk](http://www.dataplastics.co.uk)



## SP SERIES

Caps & Plugs for Threaded Parts



- STANDARD COLOUR: Red
- MATERIAL: LD Polyethylene

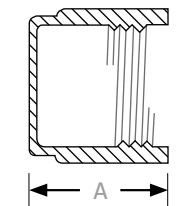
### SP25000 SERIES ~ BSP/GAS Plugs

Solid top design offering rugged protection against damage in transit, dirt or other contaminant ingress for BSP and GAS fittings.

Part Number	A		B		Thread Size	Bag Quantity
	Overall Length		Overall Diameter			
	Inches	Metric	Inches	Metric		
SP25001	0.410	10.41	0.640	16.25	1/8"	1000
SP25002	0.520	13.21	0.725	18.41	1/4"	1000
SP25003	0.537	13.64	0.900	22.86	3/8"	500
SP25004	0.685	17.40	1.120	28.45	1/2"	500
SP25005	0.735	18.67	1.205	30.61	5/8"	500
SP25006	0.670	17.02	1.300	33.02	3/4"	500
SP25007	0.675	17.14	1.565	39.75	1"	500

## SP SERIES

Caps & Plugs for Threaded Parts



- STANDARD COLOUR: Red
- MATERIAL: LD Polyethylene

### SP26000 SERIES ~ BSP/GAS Caps

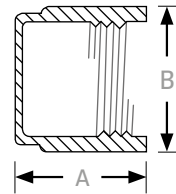
A full threaded design used in the automotive, gas, hydraulic, aerospace, pneumatic and engineering industries as a shipping cap. Also used to prevent the ingress of dirt and other contaminants.

Part Number	A		B		Thread Size BSP	Bag Quantity
	Overall Length		Overall Diameter			
	Inches	Metric	Inches	Metric		
SP26001	0.437	11.10	0.507	12.88	1/8"	1000
SP26002	0.437	11.10	0.642	16.31	1/4"	1000
SP26003	0.437	11.10	0.780	19.81	3/8"	1000
SP26004	0.531	13.49	0.957	24.31	1/2"	1000
SP26005	0.625	15.88	1.034	26.26	5/8"	1000
SP26006	0.718	18.24	1.173	29.79	3/4"	500
SP26007	0.750	19.05	1.321	33.55	7/8"	500
SP26008	0.750	19.05	1.441	36.60	1"	500
SP26009	0.750	19.05	1.804	45.82	1 1/4"	300
SP26010	0.812	20.62	2.036	51.71	1 1/2"	200
SP26011	0.843	21.41	2.539	64.49	2"	100
SP26012	1.000	25.40	2.779	70.59	2 1/4"	100
SP26013	1.125	28.58	3.162	80.31	2 1/2"	250



## SP SERIES

Caps & Plugs for Threaded Parts



- STANDARD COLOUR: Red
- MATERIAL: LD Polyethylene

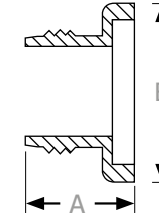
### SP27000 SERIES ~ UNF/JIC Caps

High quality, low cost threaded caps. These caps fit UNF and JIC parts and are used extensively in the aerospace industry.

Part Number	A		B		Thread Size BSP	Bag Quantity
	Overall Length		Overall Diameter			
	Inches	Metric	Inches	Metric		
SP27002	0.328	8.33	0.503	12.78	3/8" - 24	1000
SP27003	0.328	8.33	0.565	14.35	7/16" - 24	1000
SP27004	0.531	13.49	0.565	14.35	7/16" - 20	1000
SP27005	0.531	13.49	0.637	16.18	1/2" - 20	1000
SP27006	0.531	13.49	0.699	17.75	9/16" - 18	1000
SP27007	0.593	15.06	0.762	19.35	5/8" - 18	1000
SP27008	0.687	17.45	0.887	22.53	3/4" - 16	1000
SP27010	0.812	20.62	1.012	25.70	7/8" - 14	500
SP27012	0.906	23.01	1.200	30.48	1 1/16" - 14	500
SP27013	0.750	19.05	1.252	31.80	1 3/16" - 12	500
SP27015	0.875	22.23	1.502	38.15	1 5/16" - 12	500
SP27017	0.875	22.23	1.815	46.10	1 5/8" - 12	200
SP27018	1.000	25.40	2.065	52.45	1 7/8" - 12	500
SP27019	1.250	31.75	2.699	68.55	2 1/2" - 12	200
SP27020	0.578	14.68	0.503	12.78	3/8" - 24	1000

## SP SERIES

Caps & Plugs for Threaded Parts



- STANDARD COLOUR: Red
- MATERIAL: LD Polyethylene

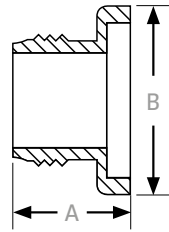
### SP28000 SERIES ~ BSP/GAS Plugs

Hollow top design provides ideal low cost protection for BSP/GAS fittings.

Part Number	A		B		Thread Size BSP	Bag Quantity
	Overall Length		Overall Diameter			
	Inches	Metric	Inches	Metric		
SP28001	0.375	9.53	0.624	15.85	1/8"	1000
SP28002	0.375	9.53	0.812	20.62	1/4"	1000
SP28003	0.453	11.51	0.937	23.80	3/8"	1000
SP28004	0.562	14.27	1.093	27.76	1/2"	1000
SP28005	0.562	14.27	1.187	30.15	5/8"	1000
SP28017	0.594	15.09	1.187	30.15	5/8"	3000
SP28006	0.687	17.45	1.375	34.93	3/4"	1000
SP28007	0.656	16.66	1.375	34.93	7/8"	500
SP28008	0.750	19.05	1.562	39.67	1"	300
SP28009	0.718	18.24	1.937	49.20	1 1/4"	1000
SP28010	0.781	19.83	2.375	60.33	1 1/2"	200
SP28011	0.781	19.83	2.687	68.25	2"	400
SP28012	1.000	25.40	3.312	84.12	2 3/4"	1000
SP28013	1.312	33.32	3.687	93.65	2 1/2"	400
SP28014	1.375	34.93	3.687	93.65	3"	200

## SP SERIES

Caps & Plugs for Threaded Parts



- STANDARD COLOUR: Red
- MATERIAL: LD Polyethylene

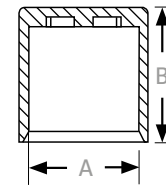
## SP29000 SERIES ~ UNF/JIC Plugs

A hollow top design to fit all 18 of the popular American hydraulic UNF and JIC thread forms.

Part Number	A		B		Thread Size	Bag Quantity
	Overall Length Inches	Overall Length Metric	Overall Diameter Inches	Overall Diameter Metric		
SP29001	0.500	12.70	0.500	12.70	5/16" - 24	1000
SP29002	0.468	11.88	0.562	14.27	3/8" - 24	1000
SP29003	0.531	13.49	0.687	17.45	7/16" - 20	1000
SP29004	0.562	14.27	0.750	19.05	1/2" - 20	1000
SP29005	0.546	13.87	0.812	20.62	9/16" - 18	1000
SP29007	0.593	15.06	0.843	21.41	5/8" - 18	1000
SP29008	0.750	19.05	1.000	25.40	3/4" - 16	1000
SP29010	0.796	20.22	1.093	27.76	7/8" - 14	1000
SP29011	0.859	21.82	1.343	34.11	1 1/16" - 12	400
SP29012	0.859	21.82	1.404	35.66	1 1/16" - 14	100
SP29013	0.890	22.61	1.654	42.01	1 5/16" - 12	200
SP29014	0.750	19.05	1.654	42.01	1 5/16" - 14	500
SP29015	0.921	23.39	2.123	53.92	1 1/2" - 12	500
SP29016	0.906	23.01	2.092	53.14	1 3/8" - 14	100
SP29017	1.015	25.78	2.404	61.06	1 7/8" - 12	100
SP29018	1.015	25.78	2.404	61.06	1 7/8" - 14	100
SP29019	1.218	30.94	3.092	78.54	2 1/2" - 12	100
SP29020	0.562	14.27	0.781	19.84	3/8" UNC	2000

## SP SERIES

Caps & Plugs for Threaded Parts



- STANDARD COLOUR: Yellow
- MATERIAL: LD Polyethylene

## SP98100 SERIES ~ Ferrules

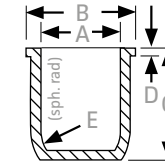
Ferrules provide a low cost decorative finish or transit protection.

Part Number	A		B		Bag Quantity
	Overall Diameter Inches	Overall Diameter Metric	Overall Diameter Inches	Overall Diameter Metric	
SP98187	0.187	4.80	0.312	7.92	5000
SP98189	0.375	9.50	0.575	14.06	5000
SP98190	0.500	12.70	0.682	17.32	5000
SP98191	0.625	15.90	0.696	17.68	5000
SP98193	0.875	22.20	0.862	21.90	4000
SP98194	1.000	25.40	0.972	24.69	2000

## SP98114 SERIES ~ Protective Thimble

This thimble caps 3/8" threaded parts and can be used as a plug too.

- STANDARD COLOUR: Red
- MATERIAL: LD Polyethylene



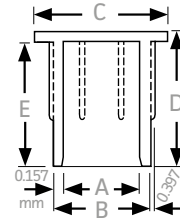
Part Number	A		B		C		D		E		Bag Quantity
	Inches	Metric	Inches	Metric	Inches	Metric	Inches	Metric	Inches	Metric	
SP98114	0.875	22.23	1.093	27.76	1.187	30.15	0.036	0.914	0.450	11.43	3000

• ALSO AVAILABLE IN OTHER COLOURS



## SP SERIES

Caps & Plugs for Threaded Parts



- STANDARD COLOURS: Red/Yellow
- MATERIAL: LD Polyethylene

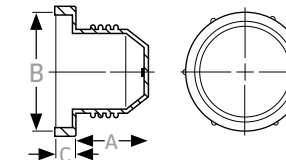
### SP70000 SERIES ~ Parallel Caps

These low cost caps feature grip and flange to assist easy fitting and removal.

	A		B		C		D		E		F		Bag Quantity
	Inches	Metric	Inches	Metric	Inches	Metric	Inches	Metric	Inches	Metric	Inches	Metric	
SP70001	0.250	6.35	0.375	9.52	0.500	12.70	0.537	13.64	0.475	12.07	0.062	1.57	1000
SP70004	0.312	7.92	0.436	11.07	0.500	12.70	0.862	21.89	0.800	20.32	0.062	1.57	5000
SP70005	0.375	9.53	0.500	12.70	0.625	15.88	1.012	25.70	0.950	24.13	0.062	1.57	5000
SP70010	0.437	11.10	0.562	14.27	0.687	17.45	1.012	25.70	0.950	24.13	0.062	1.57	5000
SP70014	0.500	12.70	0.625	15.87	0.750	19.05	1.499	38.07	1.437	36.50	0.062	1.57	1000
SP70019	0.590	14.99	0.715	18.16	0.835	21.21	1.012	25.70	0.950	24.13	0.062	1.57	1000
SP70020	0.625	15.88	0.750	19.05	0.875	22.23	1.249	31.72	1.187	30.15	0.062	1.57	1000
SP70025	0.750	19.05	0.875	22.22	1.000	25.40	1.218	30.94	1.156	29.36	0.062	1.57	1000
SP70035	1.000	25.40	1.125	28.57	1.250	31.75	1.499	38.07	1.437	36.50	0.062	1.57	1000
SP70040	1.102	27.99	1.226	31.14	1.352	34.34	1.012	25.70	0.950	24.13	0.062	1.57	1000

## HF SERIES

Flared-Fitting Plugs



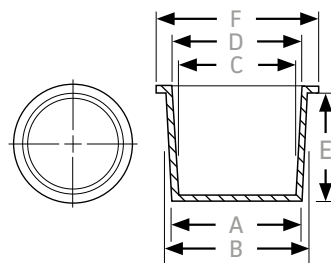
- STANDARD COLOUR: Red
- MATERIAL: HD Polyethylene

### HF SERIES ~ Flared-Fitting Plugs

Designed to protect flared fittings as well as 37° flared fittings without gasket. Engineered with a knurled head for ease of application. Will meet low-pressure testing requirements.

Part Number	To Plug (Nominal Tubing Size) Inches	To Fit Thread Size Inches	A		B		C		Box Quantity
			Inches	Metric	Inches	Metric	Inches	Metric	
HF 4	3/16"	3/8" - 24	0.460	11.70	0.500	12.70	0.180	4.57	5000
HF 6	1/4"	7/16" - 20	0.530	13.50	0.620	15.75	0.190	4.83	5000
HF 8	5/16"	1/2" - 20	0.530	13.50	0.680	17.27	0.250	6.35	5000
HF 10	3/8"	9/16" - 18	0.500	12.70	0.810	20.57	0.250	6.35	5000
HF 11	3/8"	5/8" - 18	0.590	15.00	0.810	20.57	0.250	6.35	5000
HF 12	1/2"	3/4" - 16	0.750	19.10	0.940	23.88	0.250	6.35	2500
HF 14	5/8"	7/8" - 14	0.870	22.10	1.060	26.93	0.250	6.35	2500
HF 16	3/4"	1 1/16" - 12	0.860	21.80	1.410	35.81	0.250	6.35	1500
HF 17	3/4"	1 1/16" - 14	0.860	21.80	1.410	35.81	0.250	6.35	1500
HF 18	7/8"	1 3/16" - 12	0.930	23.62	1.500	38.10	0.250	6.35	1000
HF 20	1"	1 5/16" - 12	0.930	23.60	1.500	38.10	0.250	6.35	1000
HF 22	-	1 1/2" - 12	0.930	23.60	1.750	44.45	0.250	6.35	1000
HF 24	1 1/4"	1 5/8" - 12	0.940	23.90	2.220	56.39	0.340	8.64	500
HF 26	-	1 3/4" - 12	0.970	24.64	2.310	58.97	0.340	8.64	500
HF 28	1 1/2"	1 7/8" - 12	1.060	26.92	2.470	62.74	0.380	9.65	500
HF 30	1 3/4"	2 1/4" - 12	1.310	33.30	2.750	69.85	0.380	9.65	250
HF 32	2"	2 1/2" - 12	1.310	33.30	3.090	78.49	0.380	9.65	225

## T SERIES Tapered Caps & Plugs



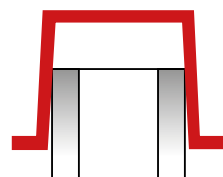
- STANDARD COLOUR: Red
- MATERIAL: LD Polyethylene

### T SERIES ~ Tapered Caps & Plugs

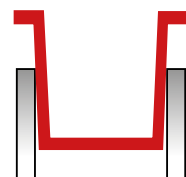
T Series tapered caps and plugs are designed for a wide range of applications to protect from contaminants, damage and debris. Easily removable, these standard parts can be used for MIL Std, SAE-type, hydraulic, non-threaded or threaded fittings.

- Flexible, easy to fit and remove
- Protection against damage, moisture or corrosion during transportation or storage
- Ideal paint mask

T Series tapered caps and plugs are particularly recommended for use on MIL Std. and SAE-type tube and hydraulic fittings or threaded external and internal NPT fittings.



When **CAPPING** the 'C' dimension must be at least 1% smaller than the diameter to be capped. Minimum 0.020.



When **PLUGGING** the 'B' dimension must be at least 1% larger than the hole to be plugged. Minimum 0.020.

## T SERIES Tapered Caps & Plugs

### T SERIES ~ Tapered Caps & Plugs

Part Number	A		B		C		D		E		F		Box Quantity
	Inches	Metric	Inches	Metric	Inches	Metric	Inches	Metric	Inches	Metric	Inches	Metric	
T01-01	0.116	2.95	0.182	4.62	0.053	1.35	0.120	3.05	0.380	9.65	0.310	7.87	5000
T02-02	0.173	4.39	0.240	6.10	0.111	2.82	0.177	4.50	0.380	9.65	0.380	9.65	5000
T03	0.210	5.33	0.275	6.99	0.146	3.71	0.211	5.36	0.310	7.87	0.450	11.43	10000
T04	0.209	5.31	0.269	6.83	0.15	3.81	0.210	5.33	0.340	8.64	0.380	9.65	15000
T05-03	0.236	5.99	0.302	7.67	0.174	4.42	0.240	6.10	0.380	9.65	0.440	11.18	5000
T06	0.267	6.78	0.335	8.51	0.205	5.21	0.273	6.93	0.380	9.65	0.470	11.94	5000
T07-04	0.299	7.59	0.365	9.27	0.235	5.97	0.302	7.67	0.380	9.65	0.500	12.70	5000
T08-05	0.330	8.38	0.396	10.06	0.267	6.78	0.333	8.46	0.380	9.65	0.530	13.46	5000
T09	0.361	9.17	0.427	10.85	0.298	7.57	0.365	9.27	0.380	9.65	0.560	14.22	5000
T11-07	0.390	9.91	0.456	11.58	0.327	8.31	0.394	10.01	0.380	9.65	0.590	14.99	5000
T12-08	0.419	10.64	0.485	12.32	0.356	9.04	0.422	10.72	0.380	9.65	0.630	16.00	5000
T13-09	0.447	11.35	0.513	13.03	0.385	9.78	0.451	11.46	0.380	9.65	0.660	16.76	5000
T14-10	0.477	12.12	0.547	13.89	0.415	10.54	0.485	12.32	0.280	7.11	0.690	17.53	7500
T15	0.471	11.96	0.547	13.89	0.409	10.39	0.485	12.32	0.440	11.18	0.690	17.53	5000
T16	0.500	12.70	0.576	14.63	0.440	11.18	0.516	13.11	0.440	11.18	0.720	18.29	5000
T17	0.532	13.51	0.608	15.44	0.468	11.89	0.545	13.84	0.440	11.18	0.750	19.05	5000
T18-11	0.554	14.07	0.612	15.55	0.490	12.45	0.551	14.00	0.310	7.87	0.750	19.05	5000
T19-12	0.550	13.97	0.631	16.03	0.487	12.37	0.568	14.43	0.470	11.94	0.750	19.05	5000
T20-13	0.580	14.73	0.667	16.94	0.518	13.16	0.605	15.37	0.500	12.70	0.810	20.57	5000
T21	0.610	15.49	0.695	17.65	0.549	13.95	0.634	16.10	0.500	12.70	0.840	21.34	5000
T22	0.640	16.26	0.727	18.47	0.578	14.68	0.664	16.87	0.500	12.70	0.880	22.35	5000
T23	0.675	17.15	0.755	19.18	0.613	15.57	0.693	17.60	0.500	12.70	0.880	22.35	5000
T24-16	0.690	17.53	0.788	20.02	0.628	15.95	0.726	18.44	0.560	14.22	0.940	23.88	5000
T26-17	0.725	18.42	0.823	20.91	0.663	16.84	0.761	19.33	0.560	14.22	0.970	24.64	5000
T27-18	0.750	19.05	0.848	21.54	0.687	17.45	0.785	19.94	0.560	14.22	1.000	25.40	5000
T28	0.802	20.37	0.911	23.14	0.740	18.80	0.849	21.56	0.630	16.00	1.060	26.93	5000
T29	0.815	20.70	0.930	23.62	0.753	19.13	0.868	22.05	0.630	16.00	1.090	27.69	5000
T30	0.854	21.69	0.958	24.33	0.790	20.07	0.894	22.71	0.630	16.00	1.130	28.70	2500
T31-20	0.869	22.07	0.973	24.71	0.805	20.45	0.909	23.09	0.720	18.29	1.130	28.70	2500
T32	0.866	22.00	0.975	24.77	0.803	20.40	0.912	23.16	0.630	16.00	1.130	28.70	5000
T33	0.960	24.38	1.047	26.59	0.900	22.86	0.987	25.07	0.500	12.70	1.190	30.23	5000
T34-21	0.915	23.24	1.040	26.42	0.855	21.72	0.980	24.89	0.690	17.53	1.160	29.47	5000
T36	0.955	24.26	1.040	26.42	0.895	22.73	0.980	24.89	0.470	11.94	1.160	29.46	3500

## T SERIES

### Tapered Caps & Plugs

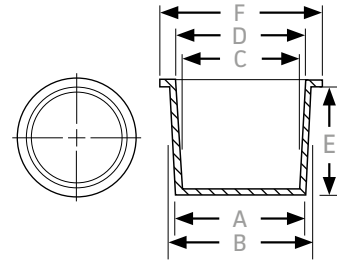
Part Number	A		B		C		D		E		F		Box Quantity
	Inches	Metric	Inches	Metric	Inches	Metric	Inches	Metric	Inches	Metric	Inches	Metric	
T37-22	0.950	24.13	1.090	27.69	0.890	22.61	1.030	26.16	1.000	25.40	1.250	31.75	1500
T38	0.964	24.49	1.090	27.69	0.901	22.89	1.027	26.09	0.750	19.05	1.250	31.75	2500
T39	0.975	24.77	1.104	28.04	0.918	23.32	1.047	26.59	0.720	18.29	1.440	36.58	2000
T40	0.995	25.27	1.145	29.08	0.933	23.70	1.083	27.51	0.750	19.05	1.310	33.28	2500
T41	1.094	27.79	1.215	30.86	1.031	26.19	1.152	29.26	0.750	19.05	1.410	35.82	2500
T42-24	1.175	29.85	1.284	32.61	1.113	28.27	1.222	31.04	0.630	16.00	1.440	36.58	2500
T43	1.175	29.85	1.284	32.61	1.113	28.27	1.222	31.04	0.630	16.00	1.670	42.42	2000
T44	1.179	29.95	1.286	32.66	1.115	28.32	1.222	31.04	0.720	18.29	1.440	36.58	1500
T45	1.276	32.41	1.312	33.32	1.155	29.32	1.190	32.23	0.500	12.70	1.380	35.05	2000
T46	1.224	31.09	1.355	34.42	1.161	29.49	1.292	32.82	0.750	19.05	1.500	38.10	2500
T47-25	1.235	31.37	1.360	34.55	1.173	29.80	1.298	32.97	0.810	20.57	1.500	38.10	2500
T48	1.292	32.82	1.356	34.44	1.231	31.27	1.295	32.89	0.720	18.29	1.500	38.10	1500
T49	1.350	34.29	1.465	37.21	1.286	32.66	1.401	35.59	0.500	12.70	1.620	41.15	2000
T50	1.312	33.32	1.465	37.21	1.248	31.70	1.401	35.59	0.720	18.29	1.620	41.15	1500
T51	1.435	36.45	1.500	38.10	1.340	34.04	1.420	36.07	0.750	19.05	1.750	44.45	1000
T52	1.344	34.14	1.507	38.28	1.282	32.56	1.445	36.70	0.910	23.11	1.770	44.96	1000
T53-27	1.447	36.75	1.600	40.64	1.384	35.15	1.537	39.04	0.880	22.35	1.750	44.45	1000
T54	1.451	36.86	1.601	40.67	1.387	35.23	1.537	39.04	0.720	18.29	1.750	44.45	1000
T55-34	1.519	38.58	1.602	40.69	1.455	36.96	1.538	39.07	0.720	18.29	1.750	44.45	1800
T56-28	1.560	39.63	1.682	42.72	1.498	38.05	1.620	41.15	0.750	19.05	1.880	47.75	1000
T57	1.574	39.98	1.688	42.88	1.514	38.46	1.628	41.35	0.620	15.75	1.880	47.75	5000
T58-29	1.633	41.48	1.750	44.45	1.569	39.85	1.690	42.93	0.690	17.53	1.840	46.74	1000
T59-30	1.720	43.69	1.850	46.99	1.664	42.27	1.794	45.57	0.720	18.29	2.030	51.56	3500
T60	1.750	44.45	1.880	47.75	1.688	42.88	1.818	46.18	0.750	19.05	2.000	50.80	1000
T61	1.780	45.21	1.950	49.53	1.718	43.64	1.888	47.96	1.000	25.40	2.130	54.10	1000
T62	1.865	47.37	1.975	50.17	1.785	45.34	1.895	48.13	0.630	16.00	2.380	60.45	2500
T63-36	1.844	46.84	2.000	50.8	1.781	45.24	1.938	49.23	1.000	25.40	2.130	54.10	1000
T65-32	1.950	49.53	2.065	52.45	1.885	47.88	2.000	50.80	0.720	18.29	2.200	55.88	2500
T66	1.900	48.26	2.076	52.73	1.837	46.66	2.013	51.13	1.000	25.40	2.250	57.15	1000
T67-37	1.975	50.17	2.132	54.15	1.913	48.59	2.070	52.58	1.000	25.40	2.250	57.15	1000
T68	2.020	51.31	2.100	53.34	2.060	52.32	2.140	54.36	0.380	9.65	2.590	65.79	1000
T69-38	2.015	51.18	2.147	54.54	1.953	49.61	2.085	52.96	0.750	19.05	2.310	58.68	1000
T70-39	2.067	52.50	2.243	56.97	2.005	50.93	2.181	55.40	1.000	25.40	2.440	61.98	1000
T71-40	2.136	54.26	2.312	58.73	2.074	52.68	2.250	57.15	1.000	25.40	2.560	65.03	1000
T24-S	2.230	56.64	2.260	57.41	2.168	55.07	2.198	55.83	0.500	12.70	2.500	63.50	3500

## T SERIES

### Tapered Caps & Plugs

Part Number	A		B		C		D		E		F		Box Quantity
	Inches	Metric	Inches	Metric	Inches	Metric	Inches	Metric	Inches	Metric	Inches	Metric	
T72	2.280	57.91	2.400	60.96	2.216	56.29	2.336	59.33	0.720	18.29	2.800	71.12	1500
T73-42	2.125	53.98	2.406	61.11	2.063	52.40	2.344	59.54	1.000	25.40	2.530	64.26	1000
T74-43	2.298	58.37	2.464	62.59	2.235	56.77	2.401	60.99	1.000	25.40	2.630	66.80	500
T75	2.300	58.42	2.464	62.59	2.220	56.39	2.383	60.53	0.710	18.03	2.660	67.56	400
T76	2.395	60.84	2.602	66.09	2.333	59.26	2.540	64.52	1.030	26.16	2.810	71.38	500
T77-45	2.480	62.99	2.644	67.16	2.418	61.42	2.582	65.59	0.630	16.00	2.780	70.61	1000
T78	2.307	58.60	2.650	67.31	2.245	57.03	2.588	65.74	1.250	31.75	2.780	70.61	500
T79	2.561	65.05	2.690	68.33	2.497	63.42	2.626	66.70	0.720	18.29	2.880	73.15	500
T80-47	2.457	62.41	2.750	69.85	2.395	60.84	2.688	68.28	1.000	25.40	2.880	73.15	500
T81-48	2.641	67.08	2.790	70.87	2.579	65.51	2.728	69.29	0.750	19.05	2.950	74.68	500
T83-49	2.849	72.37	2.980	75.69	2.787	70.79	2.918	74.12	0.750	19.05	3.250	82.55	500
T84	2.760	70.11	2.990	75.95	2.685	68.20	2.947	74.86	1.000	25.40	3.130	79.51	500
T85	2.975	75.57	3.103	78.82	2.915	74.04	3.041	77.24	0.750	19.05	3.340	84.84	500
T86-51	2.996	76.10	3.159	80.24	2.916	74.07	3.079	78.21	0.470	11.94	3.410	86.61	500
T88-52	2.982	75.75	3.245	82.43	2.912	73.97	3.175	80.65	1.000	25.40	3.380	85.86	500
T89-53	3.090	78.49	3.370	85.60	3.020	76.71	3.300	83.82	1.000	25.40	3.500	88.90	500
T90-54	3.325	84.46	3.457	87.81	3.245	82.43	3.377	85.78	0.750	19.05	3.630	92.21	250
T91-55	3.270	83.06	3.562	90.48	3.200	81.28	3.492	88.70	1.130	28.70	3.690	93.73	250
T92	3.470	88.14	3.600	91.44	3.410	86.62	3.540	89.92	0.750	19.05	3.880	98.56	500
T93	3.550	90.17	3.730	94.75	3.480	88.40	3.660	92.97	1.000	25.40	4.000	101.60	250
T94-63	3.680	93.48	3.800	96.52	3.610	91.70	3.730	94.75	0.750	19.05	4.000	101.60	250
T95-56	3.790	96.27	3.920	99.57	3.710	94.24	3.840	97.54	0.750	19.05	4.120	104.65	250
T96-59	3.930	99.83	4.070	103.38	3.860	98.05	4.000	101.60	0.750	19.05	4.380	111.26	250
T97	4.020	102.11	4.140	105.16	3.940	100.08	4.070	103.38	0.750	19.05	4.530	115.07	250
T98	4.270	108.46	4.430	112.53	4.180	106.18	4.340	110.24	0.880	22.35	4.880	123.96	250
T99	4.370	111.00	4.620	117.35	4.290	108.97	4.540	115.32	1.000	25.40	5.000	127.01	250
TX100	4.640	117.86	4.850	123.19	4.570	116.08	4.780	121.42	0.880	22.35	5.250	133.36	250
TX101	4.910	124.72	5.090	129.29	4.830	122.69	5.010	127.26	1.000	25.40	5.500	139.71	250
TX102	5.330	135.39	5.490	139.45	5.210	132.34	5.370	136.40	0.880	22.35	5.880	149.36	250
TX103	5.470	138.94	5.620	142.75	5.390	136.91	5.540	140.72	1.000	25.40	6.130	155.71	250
TX104	5.700	144.79	5.870	149.10	5.610	142.50	5.790	147.07	0.980	24.89	6.250	158.76	250
TX105	6.010	152.66	6.180	156.98	5.920	150.37	6.100	154.95	1.000	25.40	6.620	168.15	250
TX106	6.400	162.57	6.560	166.63	6.330	160.79	6.490	164.85	0.870	22.10	6.940	176.28	100

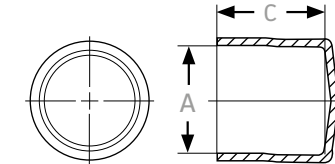
## T SERIES Tapered Caps & Plugs



- STANDARD COLOUR: Red
- MATERIAL: LD Polyethylene

Part Number	A		B		C		D		E		F		Box Quantity
	Inches	Metric	Inches	Metric	Inches	Metric	Inches	Metric	Inches	Metric	Inches	Metric	
<b>TX107</b>	6.610	167.90	6.710	170.44	6.530	165.87	6.630	168.41	1.500	38.10	7.190	182.63	100
<b>TX108</b>	7.050	179.08	7.120	180.86	6.970	177.04	7.060	179.33	1.000	25.40	7.630	193.81	100
<b>TX109</b>	7.340	186.44	7.650	194.32	7.260	184.41	7.560	192.03	1.000	25.40	7.940	201.68	100
<b>TX110</b>	7.660	194.57	7.840	199.14	7.580	192.54	7.760	197.11	1.000	25.40	8.120	206.26	100
<b>TX111</b>	7.970	202.45	8.140	206.76	7.880	200.16	8.050	204.48	1.000	25.40	8.380	212.86	100
<b>TX112</b>	8.670	220.23	8.730	221.75	8.550	217.18	8.600	218.45	1.500	38.10	9.130	231.91	50
<b>TX113</b>	9.970	253.24	10.220	259.59	9.820	249.43	10.080	256.03	0.970	24.64	10.560	268.22	75
<b>TX114</b>	10.790	274.07	11.098	281.89	10.620	269.75	10.910	277.11	1.750	44.45	11.600	294.64	40

## VC SERIES Vinyl Caps



- STANDARD COLOUR: Black
- MATERIAL: PVC

### VC SERIES ~ Vinyl Caps

These pliable PVC caps stretch to fit for ideal protection where tolerances vary. Resistant to tearing and cracking with an extensive range of sizes available in addition to the selection shown. Standard material Black withstands 75°C. This range is available to order in Hi-Temp material to withstand 240°C.

Part Number	A		C		Box Quantity
	Overall Diameter		Overall Length		
	Inches	Metric	Inches	Metric	
<b>VC 054-10</b>	0.054	1.37	0.625	15.88	5000
<b>VC 062-10</b>	0.062	1.57	0.625	15.88	5000
<b>VC 072-10</b>	0.072	1.83	0.625	15.88	5000
<b>VC 080-10</b>	0.080	2.03	0.625	15.88	5000
<b>VC 093-12</b>	0.093	2.36	0.750	19.05	5000
<b>VC 109-12</b>	0.109	2.77	0.750	19.05	5000
<b>VC 125-08</b>	0.125	3.18	0.500	12.70	5000
<b>VC 125-16</b>	0.125	3.18	1.000	25.40	5000
<b>VC 140-08</b>	0.140	3.56	0.500	12.70	5000
<b>VC 140-16</b>	0.140	3.56	1.000	25.40	5000
<b>VC 148-08</b>	0.148	3.76	0.500	12.70	5000
<b>VC 148-16</b>	0.148	3.76	1.000	25.40	5000
<b>VC 156-08</b>	0.156	3.96	0.500	12.70	5000
<b>VC 156-16</b>	0.156	3.96	1.000	25.40	5000
<b>VC 161-08</b>	0.161	4.09	0.500	12.70	5000
<b>VC 161-16</b>	0.161	4.09	1.000	25.40	5000
<b>VC 172-08</b>	0.172	4.37	0.500	12.70	5000

Part Number	A		C		Box Quantity
	Overall Diameter		Overall Length		
	Inches	Metric	Inches	Metric	
<b>VC 172-16</b>	0.172	4.37	1.000	25.40	5000
<b>VC 180-08</b>	0.180	4.57	0.500	12.70	5000
<b>VC 180-16</b>	0.180	4.57	1.000	25.40	5000
<b>VC 187-08</b>	0.187	4.75	0.500	12.70	5000
<b>VC 187-16</b>	0.187	4.75	1.000	25.40	5000
<b>VC 187-24</b>	0.187	4.75	1.500	38.10	4000
<b>VC 203-08</b>	0.203	5.16	0.500	12.70	5000
<b>VC 203-16</b>	0.203	5.16	1.000	25.40	5000
<b>VC 218-08</b>	0.218	5.54	0.500	12.70	5000
<b>VC 218-16</b>	0.218	5.54	1.000	25.40	5000
<b>VC 224-08</b>	0.224	5.69	0.500	12.70	5000
<b>VC 224-16</b>	0.224	5.69	1.000	25.40	5000
<b>VC 234-08</b>	0.234	5.94	0.500	12.70	5000
<b>VC 234-16</b>	0.234	5.94	1.000	25.40	5000
<b>VC 240-08</b>	0.240	6.09	0.500	12.70	5000
<b>VC 240-16</b>	0.240	6.09	1.000	25.40	5000
<b>VC 250-08</b>	0.250	6.35	0.500	12.70	5000

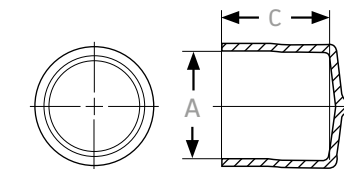
## VC SERIES Vinyl Caps

Part Number	A		C		Box Quantity
	Overall Diameter		Overall Length		
	Inches	Metric	Inches	Metric	
VC 250-16	0.250	6.35	1.000	25.40	5000
VC 270-10	0.270	6.86	0.625	15.87	5000
VC 281-80	0.281	7.14	0.500	12.70	5000
VC 281-16	0.281	7.14	1.000	25.40	5000
VC 290-08	0.290	7.37	0.500	12.70	5000
VC 290-16	0.290	7.37	1.000	25.40	5000
VC 304-08	0.304	7.72	0.500	12.70	5000
VC 304-16	0.304	7.72	1.000	25.40	4000
VC 312-08	0.312	7.93	0.500	12.70	5000
VC 312-16	0.312	7.93	1.000	25.40	5000
VC 312-24	0.312	7.93	1.500	38.10	2500
VC 343-08	0.343	8.71	0.500	12.70	5000
VC 343-16	0.343	8.71	1.000	25.40	2500
VC 375-08	0.375	9.53	0.500	12.70	5000
VC 375-16	0.375	9.53	1.000	25.40	2500
VC 406-08	0.406	10.31	0.500	12.70	5000
VC 406-16	0.406	10.31	1.000	25.40	2500
VC 437-08	0.437	11.10	0.500	12.70	5000
VC 437-16	0.437	11.10	1.000	25.40	2500
VC 460-08	0.460	11.68	0.500	12.70	5000
VC 460-16	0.460	11.68	1.000	25.40	2500
VC 467-08	0.467	11.86	0.500	12.70	5000
VC 467-16	0.467	11.86	1.000	25.40	2500
VC 490-08	0.490	12.45	0.500	12.70	5000
VC 490-16	0.490	12.45	1.000	25.40	3000
VC 500-08	0.500	12.70	0.500	12.70	5000
VC 500-16	0.500	12.70	1.000	25.40	2500
VC 531-08	0.531	13.49	0.500	12.70	5000
VC 531-16	0.531	13.49	1.000	25.40	2500
VC 562-08	0.562	14.28	0.500	12.70	2500
VC 562-16	0.562	14.28	1.000	25.40	2500
VC 600-08	0.600	15.24	0.500	12.70	3000
VC 600-16	0.600	15.24	1.000	25.40	2000
VC 625-08	0.625	15.88	0.500	12.70	2500
VC 625-16	0.625	15.88	1.000	25.40	2500

Part Number	A		C		Box Quantity
	Overall Diameter		Overall Length		
	Inches	Metric	Inches	Metric	
VC 625-24	0.625	15.88	1.500	38.10	2000
VC 640-08	0.640	16.26	0.500	12.70	4000
VC 640-16	0.640	16.26	1.000	25.40	2000
VC 665-08	0.665	16.89	0.500	12.70	4000
VC 665-16	0.665	16.89	1.000	25.40	2000
VC 687-08	0.687	17.45	0.500	12.70	2500
VC 687-16	0.687	17.45	1.000	25.40	1000
VC 690-08	0.690	17.53	0.500	12.70	2500
VC 690-16	0.690	17.53	1.000	25.40	1000
VC 725-08	0.725	18.42	0.500	12.70	2500
VC 725-16	0.725	18.42	1.000	25.40	1000
VC 750-08	0.750	19.05	0.500	12.70	2500
VC 750-16	0.750	19.05	1.000	25.40	1000
VC 812-08	0.812	20.63	0.500	12.70	2500
VC 812-16	0.812	20.63	1.000	25.40	1000
VC 812-24	0.812	20.63	1.500	38.10	1000
VC 825-08	0.825	20.95	0.500	12.70	2500
VC 825-16	0.825	20.95	1.000	25.40	1000
VC 843-08	0.843	21.41	0.500	12.70	2500
VC 843-16	0.843	21.41	1.000	25.40	1000
VC 870-08	0.870	22.10	0.500	12.70	1000
VC 870-16	0.870	22.10	1.000	25.40	1000
VC 875-08	0.875	22.23	0.500	12.70	2500
VC 875-16	0.875	22.23	1.000	25.40	1000
VC 875-24	0.875	22.23	1.500	38.10	1000
VC 937-08	0.937	23.80	0.500	12.70	2500
VC 937-16	0.937	23.80	1.000	25.40	1000
VC 985-08	0.985	25.02	0.500	12.70	2000
VC 985-16	0.985	25.02	1.000	25.40	1000
VC 1000-08	1.000	25.40	0.500	12.70	1000
VC 1000-16	1.000	25.40	1.000	25.40	1000
VC 1000-24	1.000	25.40	1.500	38.10	1000
VC 1062-16	1.062	26.97	1.000	25.40	1200
VC 1090-16	1.090	27.69	1.000	25.40	1200
VC 1125-16	1.125	28.57	1.000	25.40	1200

## VC SERIES Vinyl Caps

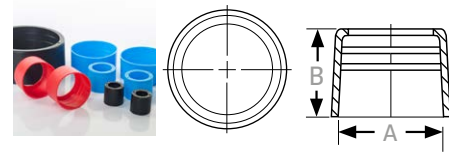
Part Number	A		C		Box Quantity
	Overall Diameter		Overall Length		
	Inches	Metric	Inches	Metric	
VC 1187-16	1.187	30.14	1.000	25.40	1000
VC 1250-16	1.250	31.75	1.000	25.40	1000
VC 1250-24	1.250	31.75	1.500	38.10	500
VC 1312-16	1.312	33.32	1.000	25.40	800
VC 1312-24	1.312	33.32	1.500	38.10	600
VC 1375-16	1.375	34.92	1.000	25.40	800
VC 1375-24	1.375	34.92	1.500	38.10	400
VC 1437-16	1.437	36.50	1.000	25.40	750
VC 1500-16	1.500	38.10	1.000	25.40	750
VC 1500-24	1.500	38.10	1.500	38.10	300
VC 1593-16	1.593	40.46	1.000	25.40	750
VC 1625-16	1.625	41.27	1.000	25.40	750
VC 1687-16	1.687	42.84	1.000	25.40	700
VC 1750-16	1.750	44.45	1.000	25.40	700
VC 1812-16	1.812	46.02	1.000	25.40	1000
VC 1875-16	1.875	47.62	1.000	25.40	600
VC 1937-16	1.937	49.20	1.000	25.40	600
VC 2000-16	2.000	50.80	1.000	25.40	600
VC 2000-24	2.000	50.80	1.500	38.10	300
VC 2125-16	2.125	53.98	1.000	25.40	500
VC 2156-16	2.156	54.76	1.000	25.40	500
VC 2250-16	2.250	57.15	1.000	25.40	500
VC 2250-24	2.250	57.15	1.500	38.10	300
VC 2375-16	2.375	60.33	1.000	25.40	400
VC 2375-24	2.375	60.33	1.500	38.10	300
VC 2460-16	2.460	62.48	1.000	25.40	400
VC 2500-16	2.500	63.50	1.000	25.40	400
VC 2500-24	2.500	63.50	1.500	38.10	250
VC 2625-16	2.625	66.67	1.000	25.40	400
VC 2625-24	2.625	66.67	1.500	38.10	200
VC 2687-16	2.687	68.25	1.000	25.40	400
VC 2750-16	2.750	69.85	1.000	25.40	300
VC 2750-24	2.750	69.85	1.500	38.10	200



- STANDARD COLOUR: Black
- MATERIAL: PVC

Part Number	A		C		Box Quantity
	Overall Diameter		Overall Length		
	Inches	Metric	Inches	Metric	
VC 2875-16	2.875	73.03	1.000	25.40	250
VC 3000-16	3.000	76.20	1.000	25.40	250
VC 2000-24	3.000	76.20	1.500	38.10	250
VC 3125-16	3.125	79.37	1.000	25.40	250
VC 3125-24	3.125	79.37	1.500	38.10	300

## OE & CE SERIES Pipe Thread Protectors

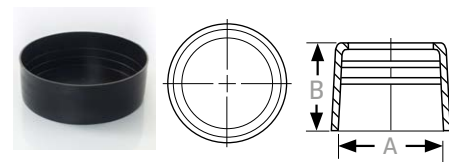


### OE SERIES ~ Open End

The OE Series has a specially designed bead to assure a snug fit for excellent protection of threaded pipe and conduit. An inexpensive way to eliminate a costly concern.

- MATERIAL: LD Polyethylene

Part Number	NPT Size	A		B		Colour	Box Quantity
		Inches	Metric	Inches	Metric		
OE 311	½"	0.840	21.30	0.780	19.80	Black	5000
OE 312	¾"	1.050	26.70	0.780	19.80	Red	3500
OE 313	1"	1.315	33.40	0.970	24.60	Blue	4000
OE 314	1¼"	1.660	42.20	1.000	25.40	Red	2500
OE 315	1½"	1.900	48.30	1.000	25.40	Black	200
OE 316	2"	2.375	60.30	1.030	26.20	Blue	1200
OE 317	2½"	2.875	73.00	1.560	39.60	Black	600
OE 318	3"	3.500	88.90	1.630	41.40	Blue	400
OE 319	3½"	4.000	101.60	1.660	42.20	Black	300
OE 320	4"	4.500	114.30	1.720	43.70	Blue	225
OE 321	5"	5.563	141.30	1.810	46.00	Blue	120
OE 322	6"	6.625	168.30	1.940	49.30	Blue	80



### CE SERIES ~ Closed End

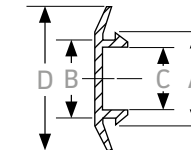
Excellent protection against damage caused during transit. Eliminates debris from entering the pipe, designed for easy installation and removal.

- STANDARD COLOUR: Black
- OTHER COLOURS: Available on request
- MATERIAL: LD Polyethylene

Part Number	NPT Size	A		B		Colour	Box Quantity
		Inches	Metric	Inches	Metric		
CE 309	¼"	0.539	13.70	0.59	15.00	Black	7000
CE 310	⅜"	0.673	17.10	0.590	15.00	Black	4000
CE 311	½"	0.840	21.30	0.780	20.00	Black	5000
CE 312	¾"	1.050	26.70	0.780	20.00	Black	4000
CE 313	1"	1.315	33.40	0.970	25.00	Black	4500
CE 314	1¼"	1.660	42.20	1.000	25.00	Black	2500
CE 315	1½"	1.900	48.30	1.000	25.00	Black	2000
CE 316	2"	2.375	60.30	1.030	26.00	Black	1200
CE 317	2½"	2.875	73.00	1.560	40.00	Black	500
CE 318	3"	3.500	88.90	1.630	41.00	Black	400
CE 319	3½"	4.000	101.60	1.660	42.00	Black	300
CE 320	4"	4.500	114.30	1.720	44.00	Black	225
CE 321	5"	5.563	141.30	1.810	46.00	Black	120
CE 322	6"	6.625	168.30	1.940	49.00	Black	80
CE 324	8"	8.625	219.10	2.130	54.00	Black	80
CE 325	10"	10.750	273.10	2.340	59.00	Black	40
CE 326	12"	12.750	323.90	2.5300	64.00	Black	25

❓ To match nominal bore use the 'NPT Size' column.

## SI SERIES Snap-In Plugs



- STANDARD COLOUR: Black
- MATERIAL: LD Polyethylene

### SI SERIES ~ Snap-In Plugs

Snap-in plugs provide an attractive finished appearance for access holes in sheet metal. Widely used on automotive bodies, tanks, appliances or in any application where an attractive appearance is needed. A flexible yet durable solution, the snap-in ring provides a secure fit.

Part Number	Hole Size		Metal Thickness		Dimension A		Dimension B		Dimension C		Box Quantity
	Inches	Metric	Inches	Metric	Inches	Metric	Inches	Metric	Inches	Metric	
SI 659	0.370 - 0.380	9.40 - 9.65	0.020 - 0.050	.51 - 1.27	0.190	4.83	0.750	19.05	0.410	10.41	5000
SI 659-1	0.370 - 0.380	9.40 - 9.65	0.060 - 0.110	1.52 - 2.79	0.240	6.10	0.750	19.05	0.410	10.41	5000
SI 400	0.430 - 0.450	10.92 - 11.43	0.030 - 0.060	.76 - 1.52	0.220	5.59	0.690	17.53	0.470	11.94	5000
SI 411	0.490 - 0.510	12.45 - 12.95	0.030 - 0.080	.76 - 2.03	0.250	6.35	0.860	21.84	0.540	13.72	5000
SI 401	0.550 - 0.560	13.97 - 14.22	0.030 - 0.080	.76 - 2.03	0.250	6.35	0.860	21.84	0.590	15.06	5000
SI 430	0.610 - 0.630	15.49 - 16.00	0.060 - 0.080	1.52 - 2.03	0.260	6.60	0.810	20.57	0.670	17.02	5000
SI 430S	0.620	15.87	0.060 - 0.080	1.52 - 2.03	0.250	6.35	1.060	26.92	0.680	17.15	10000
SI 437	0.680 - 0.700	17.27 - 17.78	0.030 - 0.080	.76 - 2.03	0.250	6.35	1.010	25.66	0.730	18.54	5000
SI 412	0.730 - 0.760	18.54 - 19.30	0.050 - 0.110	1.27 - 2.79	0.290	7.37	1.010	25.66	0.790	20.07	5000
SI 402	0.800 - 0.830	20.32 - 21.08	0.160 - 0.190	4.06 - 4.83	0.370	9.40	1.110	28.20	0.850	21.59	5000
SI 402S	0.810	20.62	0.030 - 0.080	.76 - 2.03	0.370	9.40	1.110	28.19	0.850	21.59	6000
SI 438	0.860 - 0.880	21.84 - 22.35	0.030 - 0.080	.76 - 2.03	0.250	6.35	1.160	29.47	0.910	23.11	5000
SI 438S	0.860 - 0.880	21.84 - 22.35	0.130 - 0.180	3.30 - 4.57	0.360	9.14	1.160	29.47	0.910	23.11	5000
SI 403	0.920 - 0.950	23.37 - 24.13	0.030 - 0.080	.76 - 2.03	0.250	6.35	1.310	33.28	0.980	24.89	5000
SI 413	1.000	25.40	0.030 - 0.080	.76 - 2.03	0.250	6.35	1.380	35.05	1.040	26.42	5000
SI 465	1.090	27.60	0.030 - 0.080	.76 - 2.03	0.250	6.35	1.310	33.27	1.150	29.21	5000
SI 404	1.125	28.58	0.030 - 0.080	.76 - 2.03	0.430	10.92	1.530	38.86	1.180	29.97	2000



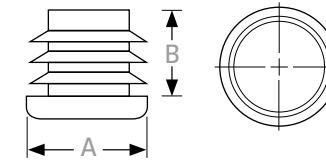
# SI SERIES

## Snap-In Plugs

Part Number	Hole Size		Metal Thickness		A		B		C		Box Quantity
	Inches	Metric	Inches	Metric	Inches	Metric	Inches	Metric	Inches	Metric	
SI 457	1.160 - 1.200	29.47 - 30.48	.030 - .080	.76 - 2.03	0.250	6.35	1.560	39.63	1.220	30.99	2500
SI 414	1.250	31.75	.030 - .080	.76 - 2.03	0.250	6.35	1.620	41.15	1.290	32.77	2500
SI 405	1.290 - 1.330	32.77 - 33.78	.030 - .080	.76 - 2.03	0.250	6.35	1.680	42.67	1.360	34.55	2500
SI 415	1.500	38.10	.030 - .080	.76 - 2.03	0.250	6.35	1.880	47.75	1.540	39.12	2000
SI 416	1.750	44.45	.030 - .080	.76 - 2.03	0.250	6.35	2.120	53.85	1.790	45.47	1500
SI 417	1.980 - 2.010	50.29 - 51.05	.030 - .080	.76 - 2.03	0.290	7.36	2.360	59.94	2.040	51.81	1000
SI 406	2.100 - 2.140	53.34 - 54.36	.030 - .080	.76 - 2.03	0.250	6.35	2.490	63.25	2.170	55.12	1000
SI 419	2.500	63.50	.030 - .080	.76 - 2.03	0.250	6.35	3.000	76.20	2.560	65.02	1000
SI 472	2.620	66.67	.030 - .080	.76 - 2.03	0.250	6.35	3.120	79.25	2.680	67.95	1000
SI 421	2.970 - 3.020	75.44 - 76.71	.030 - .080	.76 - 2.03	0.250	6.35	3.360	85.35	3.060	77.73	750
SI 407	3.120	79.37	.030 - .080	.76 - 2.03	0.250	6.35	3.520	89.41	3.180	80.77	700
SI 408	3.350 - 3.400	85.09 - 86.36	.030 - .080	.76 - 2.03	0.280	7.11	3.750	95.25	3.430	87.13	500
SI 409	3.470 - 3.520	88.14 - 89.41	.030 - .110	.76 - 2.79	0.280	7.11	3.860	98.05	3.560	90.43	500
SI 425	4.000	101.60	.050 - .100	1.27 - 2.54	0.290	7.37	4.500	114.30	4.060	103.12	350
SI 425S	4.000	101.60	.050 - .100	1.27 - 2.54	0.500	12.70	4.500	114.30	4.100	104.14	400

# RIBBED INSERTS

## Round



- STANDARD COLOUR: Black
- OTHER COLOURS: Available on request
- MATERIAL: LD Polyethylene

### Metric Round Ribbed Inserts

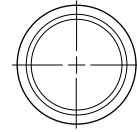
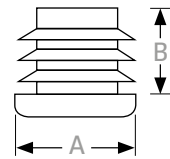
All inserts are measured by the outer head size. These parts are produced with varying rib sizes to accommodate different gauge wall thickness. Available in other colours to special order.

Size (mm)	Description	Wall Thickness	Box Quantity
12.7	Ribbed	1.2 - 1.6mm	10,000
15.8	Ribbed	1.0 - 2.0mm	5,000
19.0	Ribbed	1.0 - 2.0mm	5,000
22.2	Ribbed	1.0 - 2.0mm	4,000
25.4	Ribbed	1.0 - 2.0mm	4,000
25.4	Ribbed	2.0 - 3.2mm	4,000
28.5	Ribbed	1.0 - 2.0mm	2,500
31.7	Ribbed	1.0 - 2.0mm	2,500
31.7	Ribbed	2.0 - 3.0mm	2,500
38.1	Ribbed	1.0 - 2.0mm	1,500
41.2	Ribbed	1.0 - 2.0mm	1,000
44.4	Ribbed	1.0 - 2.0mm	1,000
48.0	Ribbed	2.0 - 3.0mm	500
48.0	Ribbed	3.5 - 4.5mm	500
50.8	Ribbed	1.0 - 2.0mm	500
50.8	Ribbed	2.0 - 3.2mm	500
57.1	Ribbed	2.0 - 3.2mm	500

Size (mm)	Description	Wall Thickness	Box Quantity
60.3	Ribbed	2.0 - 3.2	400
63.5	Ribbed	1.0 - 2.0	400
63.5	Ribbed	2.7 - 4.2	400
100.0	Ribbed	4.5 - 6.0	200
110.0	Ribbed	4.5 - 6.0	100

# RIBBED INSERTS

Round



- STANDARD COLOUR: Black
- OTHER COLOURS: Available on request
- MATERIAL: LD Polyethylene

## Imperial Round Ribbed Inserts

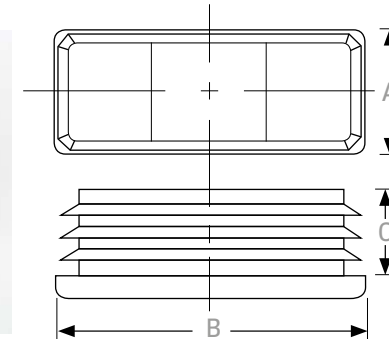
All inserts are measured by the outer head size. These parts are produced with varying rib sizes to accommodate different gauge wall thickness. Available in other colours to special order.

Size (Inches)	Description	Wall Thickness	Box Quantity
½"	Ribbed	16-18G	10000
¾"	Ribbed	14-20G	5000
¾"	Ribbed	14-20G	5000
7/8"	Ribbed	14-20G	4000
1"	Ribbed	14-20G	4000
1"	Ribbed	10-14G	4000
1 1/8"	Ribbed	14-20G	2500
1 1/4"	Ribbed	14-20G	2500
1 1/4"	Ribbed	10-14G	2500
1 1/2"	Ribbed	14-20G	1500
1 5/8"	Ribbed	14-20G	1000
1 3/4"	Ribbed	14-20G	1000
1 29/32"	Ribbed	6-10G	500
2"	Ribbed	14-20G	500
2"	Ribbed	10-14G	500

Size (Inches)	Description	Wall Thickness	Box Quantity
2 1/4"	Ribbed	10-14G	500
2 3/8"	Ribbed	10-14G	400
2 1/2"	Ribbed	14-18G	400
2 1/2"	Ribbed	8-12G	400

# RIBBED INSERTS

Rectangular



- STANDARD COLOUR: Black
- OTHER COLOURS: Available on request
- MATERIAL: LD Polyethylene

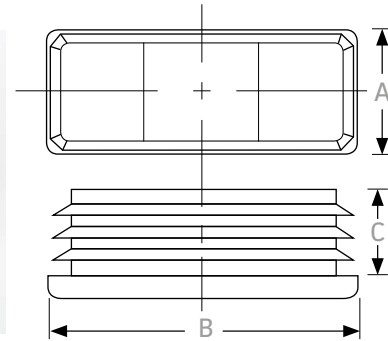
## Metric Rectangular Ribbed Inserts

All inserts are measured by the outer head size. These parts are produced with varying rib sizes to accommodate different gauge wall thickness. Available in other colours to special order.

Size (mm)	Description	Wall Thickness	Box Quantity
40x20	Ribbed	1.0-2.5mm	2000
40x25	Ribbed	1.0-2.0mm	1500
50x30	Ribbed	1.5-3.0mm	1000
50x34	Ribbed	1.0-2.0mm	500
60x20	Ribbed	1.2-1.6mm	1000
60x30	Ribbed	1.5-3.0mm	500
60x40	Ribbed	2.0-3.5mm	500
75x25	Ribbed	1.2-1.6mm	500
75x25	Ribbed	2.0-3.25mm	500
80x40	Ribbed	2.5-4.0mm	250
100x40	Ribbed	2.0-4.0mm	200
100x50	Ribbed	2.0-4.0mm	200

# RIBBED INSERTS

## Rectangular



- STANDARD COLOUR: Black
- OTHER COLOURS: Available on request
- MATERIAL: LD Polyethylene

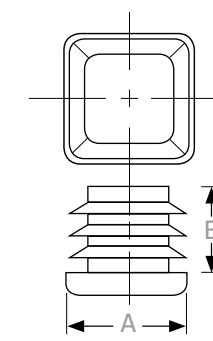
### Imperial Rectangular Ribbed Inserts

All inserts are measured by the outer head size. These parts are produced with varying rib sizes to accommodate different gauge wall thickness. Available in other colours to special order.

Size (Inches)	Description	Wall Thickness	Box Quantity
1 x ½"	Ribbed	16-18G	5000
1 ⅜ x ⅝"	Ribbed	14-20G	3000
1 ½ x ½"	Ribbed	14-20G	2000
1 ½ x ¾"	Ribbed	14-20G	2000
1 ½ x 1"	Ribbed	14-20G	2000
2 x 1"	Ribbed	14-20G	1500
2 x 1"	Ribbed	10-14G	1500
2 ½ x 1"	Ribbed	14-20G	1000
2 ½ x 1 ½"	Ribbed	14-20G	500
3 x 1"	Ribbed	10-14G	500
3 x 2"	Ribbed	10-14G	400
5 x 2"	Ribbed	7-12G	200

# RIBBED INSERTS

## Square



- STANDARD COLOUR: Black
- OTHER COLOURS: Available on request
- MATERIAL: LD Polyethylene

### Metric Square Ribbed Inserts

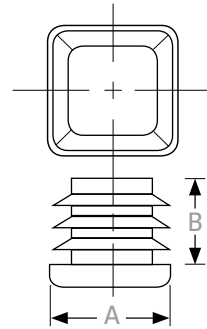
All inserts are measured by the outer head size. These parts are produced with varying rib sizes to accommodate different gauge wall thickness. Available in other colours to special order.

Size (mm)	Description	Wall Thickness	Box Quantity
12.7	Ribbed	1.2-1.6	10000
15.8	Ribbed	0.9-1.6	5000
19.7	Ribbed	1.0-2.0	5000
20.0	Ribbed	1.0-2.5	5000
22.2	Ribbed	1.0-2.0	3000
25.4	Ribbed	1.0-2.0	2500
25.4	Ribbed	2.0-3.0	2500
28.5	Ribbed	1.0-2.0	2000
30.0	Ribbed	1.0-2.0	2000
30.0	Ribbed	2.0-3.0	2000
31.7	Ribbed	1.0-2.0	2000
31.7	Ribbed	2.0-3.0	2000
34.9	Ribbed	1.0-2.0	1000
38.1	Ribbed	1.0-2.0	1000
38.1	Ribbed	2.0-3.0	1000
40.0	Ribbed	1.0-2.0	500
40.0	Ribbed	2.0-3.0	500

Size (mm)	Description	Wall Thickness	Box Quantity
44.4	Ribbed	1.0-2.0	500
44.4	Ribbed	2.0-3.0	500
50.8	Ribbed	1.0-2.0	500
50.8	Ribbed	2.0-3.0	500
60.0	Ribbed	3.0-5.0	325

## RIBBED INSERTS

### Square



- STANDARD COLOUR: **Black**
- OTHER COLOURS: **Available on request**
- MATERIAL: **LD Polyethylene**

### Imperial Square Ribbed Inserts

Square inserts may be fitted into square tubing giving a neat, smart finish. Our ribbed square inserts cover up sharp tube edges and are fitted easily and securely into a variety of gauges.

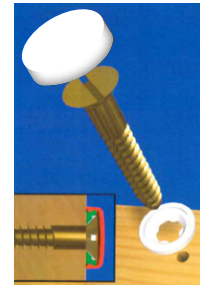
Size (Inches)	Description	Wall Thickness	Box Quantity
½"	Ribbed	16-18G	10000
¾"	Ribbed	16-20G	5000
¾"	Ribbed	14-20G	5000
7/8"	Ribbed	14-20G	3000
1"	Ribbed	14-20G	2500
1"	Ribbed	10-14G	2500
1 1/8"	Ribbed	14-20G	2000
1 1/4"	Ribbed	14-20G	2000
1 1/4"	Ribbed	10-14G	2000
1 3/8"	Ribbed	14-20G	1000
1 1/2"	Ribbed	14-20G	1000
1 1/2"	Ribbed	10-14G	1000
1 3/4"	Ribbed	10-14G	1000
1 3/4"	Ribbed	14-20G	1000
2"	Ribbed	14-20G	500
2"	Ribbed	10-14G	500

## SP SERIES

### Screw Cap Covers and Washers

### SP60000 SERIES ~ Screw Cap Covers and Washers

SP60000 screw cap covers and washers are available in white as a stock item. The simple cap and washer system decorates and protects nails and screws including panhead, crosshead and drive types up to size 9 (M4). Made from tough Co-Polymer Polypropylene, all caps are UV stabilised to maintain their colour in sunlight and are used within the automotive, caravan, shopfitting and marine sectors.



CAP	Cap Height	Outside Diameter	WASHER	WASHER COLOUR
SP60000C	4mm	13mm	SP60000W	White



- MATERIAL: **Co-Polymer Polypropylene**

### Colour Matching

We are able to supply in any colour match to a RAL, Pantone or British Standard colour as a special run, subject to a minimum order quantity.



- STANDARD COLOURS: Black or Natural
- MATERIAL: Nylon 66

## CABLE TIES

We offer a full range of top quality cable ties in all sizes and two standard colours. Let us know your requirements and we will send you a quote.

- Packed in 100's or 1000's
- Other colours available on request

## SAMPLES

Samples are available on request. Please call us to discuss your requirements on 01993 700777.

# Self-Fit Mouthguards



- ✓ **Reduces** - shock impact injury or concussion
- ✓ **Protects** - helps protect teeth and gums
- ✓ **Simple** - moulds to shape
- ✓ **Flexible** - can be adapted for changes to dental/jaw growth

## for Active Sports

- ✓ **Comfortable** - soft and easy fit, non-gag
- ✓ **Cost effective** - when mislaid or spares required
- ✓ **Re-mouldable**
- ✓ **Hygienic** - with Biomaster antibacterial case

## RANGE OF SIZE AND COLOURS – SUITABLE FOR ALL AGES

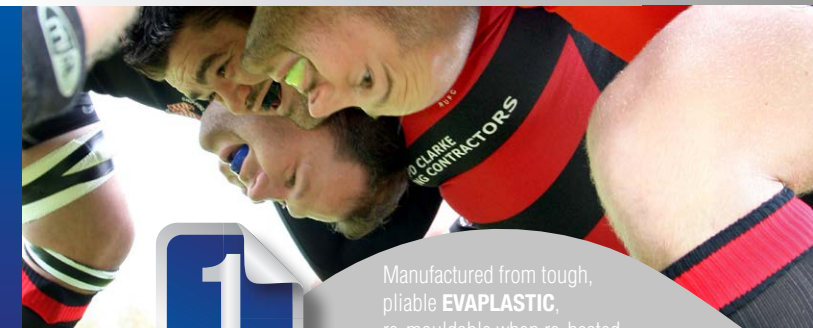
UK Manufactured for peace of mind  
and protection you can rely on

## The most cost effective protection for all contact sport

Ensure you always have stock available.

Order direct for 1, 10s or 100s at [www.mouthguardsdirect.co.uk](http://www.mouthguardsdirect.co.uk)  
or t: 01993 700888

See Terms & Conditions on Mouthguards Direct website



1  
year  
warranty

Manufactured from tough,  
pliable **EVAPLASTIC**,  
re-mouldable when re-heated





# CONVERSION TABLE

Millimetres	Inches	Decimal
0.4	1/64"	0.02
0.79	1/32"	0.03
1.19	3/64"	0.05
1.59	1/16"	0.06
1.98	5/64"	0.08
2.38	3/32"	0.09
2.78	7/64"	0.11
3.17	1/8"	0.13
3.57	9/64"	0.14
3.97	5/32"	0.16
4.36	11/64"	0.17
4.76	3/16"	0.18
5.16	13/64"	0.20
5.56	7/32"	0.22
5.95	15/64"	0.23
6.35	1/4"	0.25
6.75	17/64"	0.27
7.14	9/32"	0.28
7.54	19/64"	0.30
7.94	5/16"	0.31
8.33	21/64"	0.33

Millimetres	Inches	Decimal
8.73	11/32"	0.34
9.13	23/64"	0.35
9.52	3/8"	0.38
9.92	25/64"	0.39
10.32	13/32"	0.41
10.72	27/64"	0.42
11.11	7/16"	0.44
11.51	29/64"	0.45
11.91	15/32"	0.47
12.30	31/64"	0.48
12.70	1/2"	0.50
13.10	33/64"	0.52
13.49	17/32"	0.53
13.89	35/64"	0.55
14.29	9/16"	0.56
14.68	37/64"	0.58
15.08	19/32"	0.59
15.48	39/64"	0.61
15.88	5/8"	0.63
16.27	41/64"	0.64
16.67	21/32"	0.66

Millimetres	Inches	Decimal
17.07	43/64"	0.67
17.46	11/16"	0.69
17.85	45/64"	0.70
18.26	23/32"	0.72
18.65	47/64"	0.73
19.05	3/4"	0.75
19.45	49/64"	0.77
19.84	25/32"	0.78
20.24	51/64"	0.80
20.63	13/16"	0.81
21.03	53/64"	0.83
21.43	27/32"	0.84
21.83	55/64"	0.86
22.23	7/8"	0.87
22.62	57/64"	0.89
23.02	29/32"	0.91
23.42	59/64"	0.92
23.81	15/16"	0.94
24.21	61/64"	0.95
24.61	31/32"	0.97
25.00	63/64"	0.98
25.40	1"	1.00

This brochure is a guide only for our numerous standard part items. Our range continually changes and we are able to source many other standard parts on request if they are not shown. Contact us to discuss your standard part requirements or specific requests.

# TERMS & CONDITIONS

## 1. Definitions

**Buyer** The person who buys or agrees to buy the goods from the Seller.

**Seller** Means Data Plastics or its authorised representatives.

**Conditions** The terms and conditions of sale as set out in this document and any special terms and conditions agreed in writing by the Seller.

**Goods** The articles which the Buyer agrees to buy from the Seller.

**Price** The price for the Goods excluding VAT and any carriage, packaging and insurance costs.

## 2. Conditions

- i These Conditions shall form the basis of the contract between the Seller and the Buyer in relation to the sale of Goods, to the exclusion of all other terms and conditions including the Buyer's standard conditions of purchase or any other conditions which the Buyer may purport to apply under any purchase order or confirmation of order or any other document.
- ii All orders for Goods shall be deemed to be an offer by the Buyer to purchase goods from the Seller pursuant to these Conditions.
- iii Acceptance of delivery of the Goods shall be deemed to be conclusive evidence of the Buyer's acceptance of these Conditions.
- iv These Conditions may not be varied except by the written agreement of the Managing Director of the Seller.
- v These Conditions represent the whole of the agreement between the Seller and the Buyer. They supersede any other Conditions previously issued.

## 3. Price

The Price shall be the price quoted on the Seller's confirmation of order or invoice. The Price is exclusive of VAT which shall be due at the rate in force on the date of the Seller's invoice.

## 4. Payment and Interest

- i Payment of the Goods shall be due in full including any charges such as VAT, carriage and insurance within 30 days of the date of the Seller's invoice.
- ii Interest on overdue invoices shall accrue from the date when payment becomes due, calculated on a daily basis until the date of payment at the rate of 2% per annum above the Bank of England base rate from time to time in force. Such interest shall accrue after as well as before any judgment.
- iii The Buyer shall pay all accounts in full and not exercise any rights of set-off or counter-claim against invoices submitted by the Seller.

- iv Tooling – 50% of the tooling cost plus VAT is due with order, remainder of tooling is payable on sample approval and before bulk manufacture of products.

## 5. Goods

The quantity and description of the Goods shall be as set out in the Seller's confirmation of order or invoice.

## 6. Warranties

The Seller warrants that the Goods will at the time of delivery correspond to the description given by the Seller in the confirmation of order.

## 7. Delivery

- i Delivery dates quoted are based on conditions existing at the time and are not guaranteed. Any stipulated time for delivery shall date from the receipt of a written order to proceed. If at any time the Seller shall be prevented from making or delivering the goods by reason of strikes, lockouts, war, fire, accident, shortage of material or fuel or any other cause whatsoever beyond our control, the time for delivery shall be extended until such cause shall have ceased to operate, but the Seller may at any time during the continuance of such prevention, by notice, determine the contract so far as it remains unperformed without incurring any liability by reason of such determination.
- ii If the Buyer fails to take delivery of the Goods on the agreed delivery date or, if no specific delivery date has been agreed, when the Goods are ready for despatch, the Seller shall be entitled to store and insure the Goods and to charge the Buyer the reasonable costs of so doing.

## 8. Liability

- i The Seller shall not be liable to the Buyer for any loss or damage whether arising directly or indirectly from the late delivery or short delivery of the Goods. If short delivery does take place, the Buyer undertakes not to reject the Goods but to accept the Goods delivered as part performance of the contract.
- ii The Seller shall be under no liability for breakage or resultant defects occurring after delivery.
- iii If any goods show defects arising solely from faulty materials and/or workmanship, the Seller's liability shall be limited to crediting or replacing such goods, but no such liability shall arise unless notification of such defects is received by the Seller in writing ten days working days from receipt of goods.

## 9. Acceptance of the Goods

- i The Buyer shall be deemed to have accepted the

Goods 72 hours after delivery to the Buyer.

- ii The Buyer shall carry out a thorough inspection of the Goods within 48 hours of delivery and shall give written notification to the Seller within ten working days of delivery of the Goods of any defects which a reasonable examination would have revealed.
- iii Where the Buyer has accepted the Goods, or has been deemed to have accepted, the Buyer shall not be entitled to reject Goods which are not in accordance with the contract.

## 10. Title and Risk

- i Risk shall pass on delivery of the Goods to the Buyer's address.
- ii Notwithstanding the earlier passing of Risk, title of the Goods shall remain with the Seller and shall not pass to the Buyer until the amount due under the invoice for them (including interest and costs) has been paid in full.
- iii Until the title passes, the Buyer shall hold the Goods as bailee for the Seller and shall store or mark them so that they can at all times be identified as the property of the Seller.
- iv The Seller may maintain an action for the price of any Goods notwithstanding that title in them has not passed to the Buyer.
- v The Seller may at any time before title passes and without any liability to the Buyer:
  - repossess and dismantle and use or sell all or any of the Goods and by doing so terminate the Buyer's right to use, sell or otherwise deal in them; and
  - for that purpose (or determining what if any Goods are held by the Buyer and inspecting them) enter any premises of or occupied by the Buyer.

## 11. Carriage of Goods

Carriage and associated costs will be chargeable on all sales previously agreed with all parties.

## 12. Indemnity

The Buyer shall indemnify the Seller against all claims in respect of loss, injury or damage sustained by a third party however caused after receipt of goods by the Buyer and shall also pay and indemnify the Seller against all royalties or other payments in respect of any patents, registered design or other rights which may be claimed as a result of goods being made according to design, specifications or samples supplied by the Buyer and shall indemnify the Seller against all claims, expenses and costs in connection with any infringement or alleged infringement of any patent registered design or other right in the manufacture of such goods.





AVENUE THREE, STATION LANE,  
WITNEY, OXFORDSHIRE OX28 4BP

01993 700 777

[sales@dataplastics.co.uk](mailto:sales@dataplastics.co.uk)

[www.dataplastics.co.uk](http://www.dataplastics.co.uk)